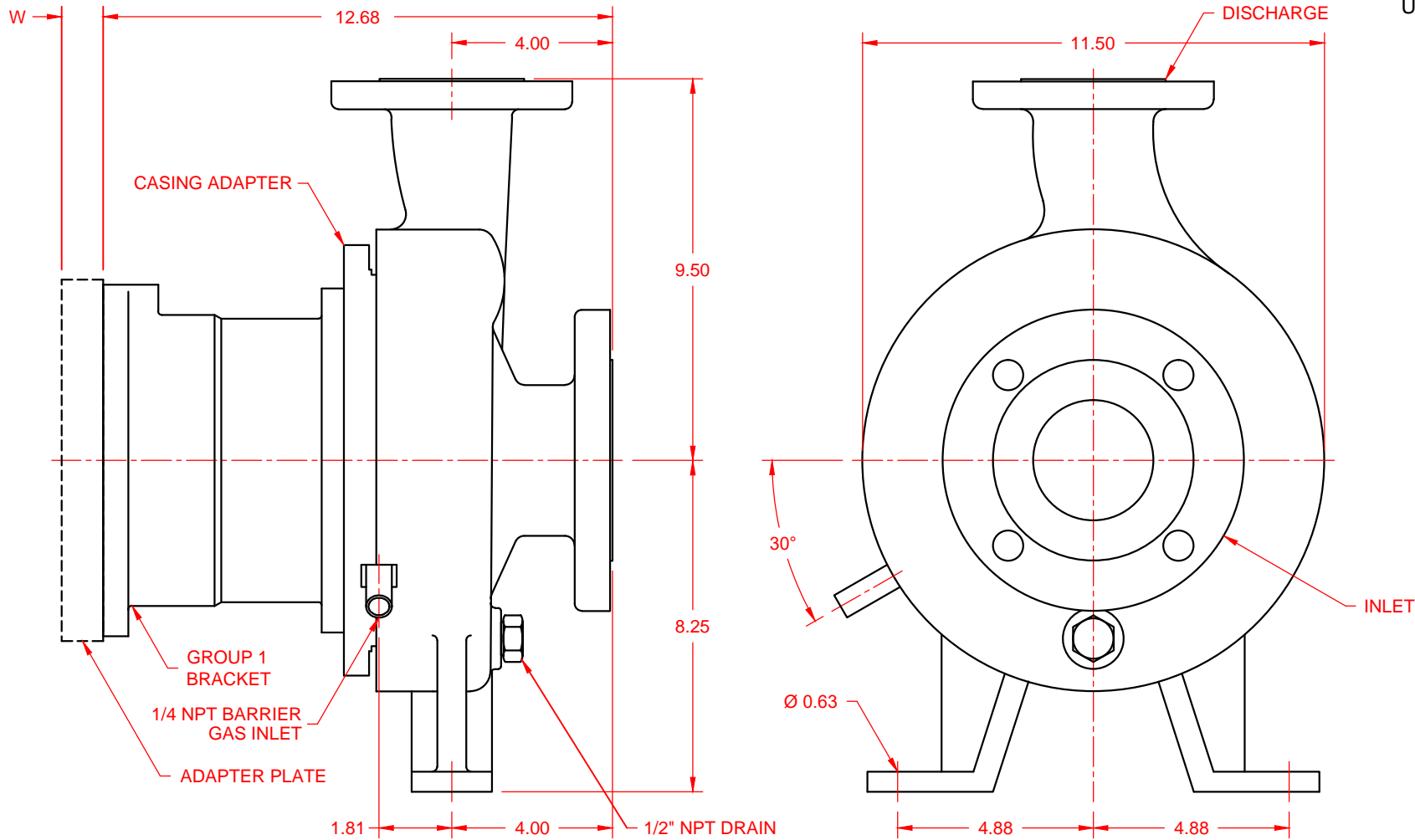


SERIES	GROUP	MODEL	CONFIGURATION
ENDURA	II	AB 3 x 2 x 8 w/ Group 1 Drive Section	ANSI Centrifugal Pump Mag-Drive, Close-Coupled Version

UNITS: inches



MOTOR FRAME / ADAPTER PLATE WIDTH

CASING SIZE	INLET	DISCHARGE	MOTOR FRAME / ADAPTER PLATE WIDTH										
			56C	143/ 145TC	182/ 184TC	213/ 215TC	254/ 256TC	284/ 286TC	284/ 286TSC	IEC 90	IEC 100/112	IEC 132	IEC 160
3 x 2 x 8	3" RF	2" RF	1.03	1.03	1.03	1.03	1.68	2.53	0.83	0.53	0.92	1.00	2.03

NOTES:  
 1) Pump requires motor with feet.

DWG. NO. 20836 REV.