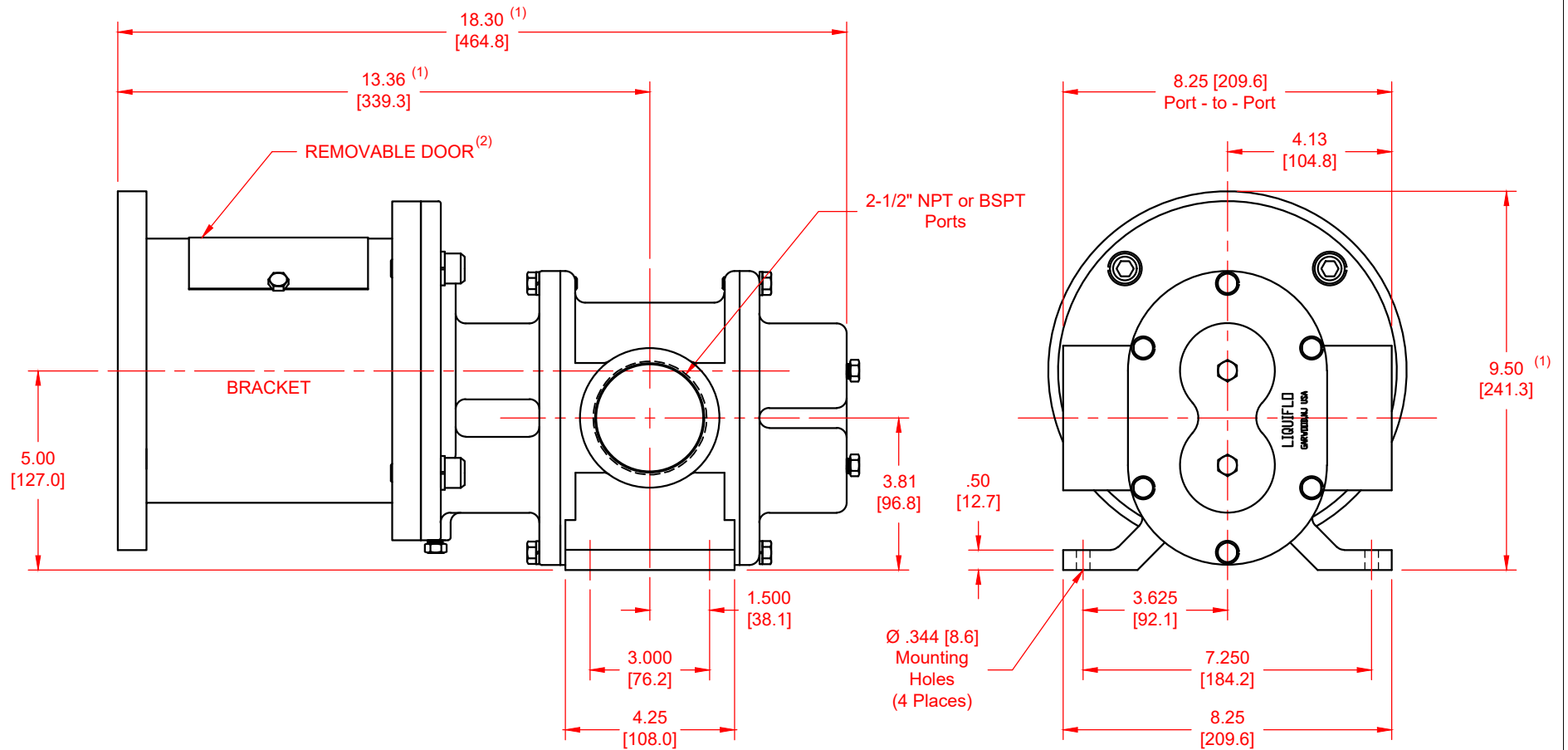


SERIES	MODEL	CONFIGURATION	SEAL TYPE
H-Series	H14F	Sealed or Mag-Drive Gear Pump Close-Coupled Version (NEMA) with NPT or BSPT Ports	Single or Double Mechanical Seal or Mag-Drive (Sealless)

UNITS: inches [mm]



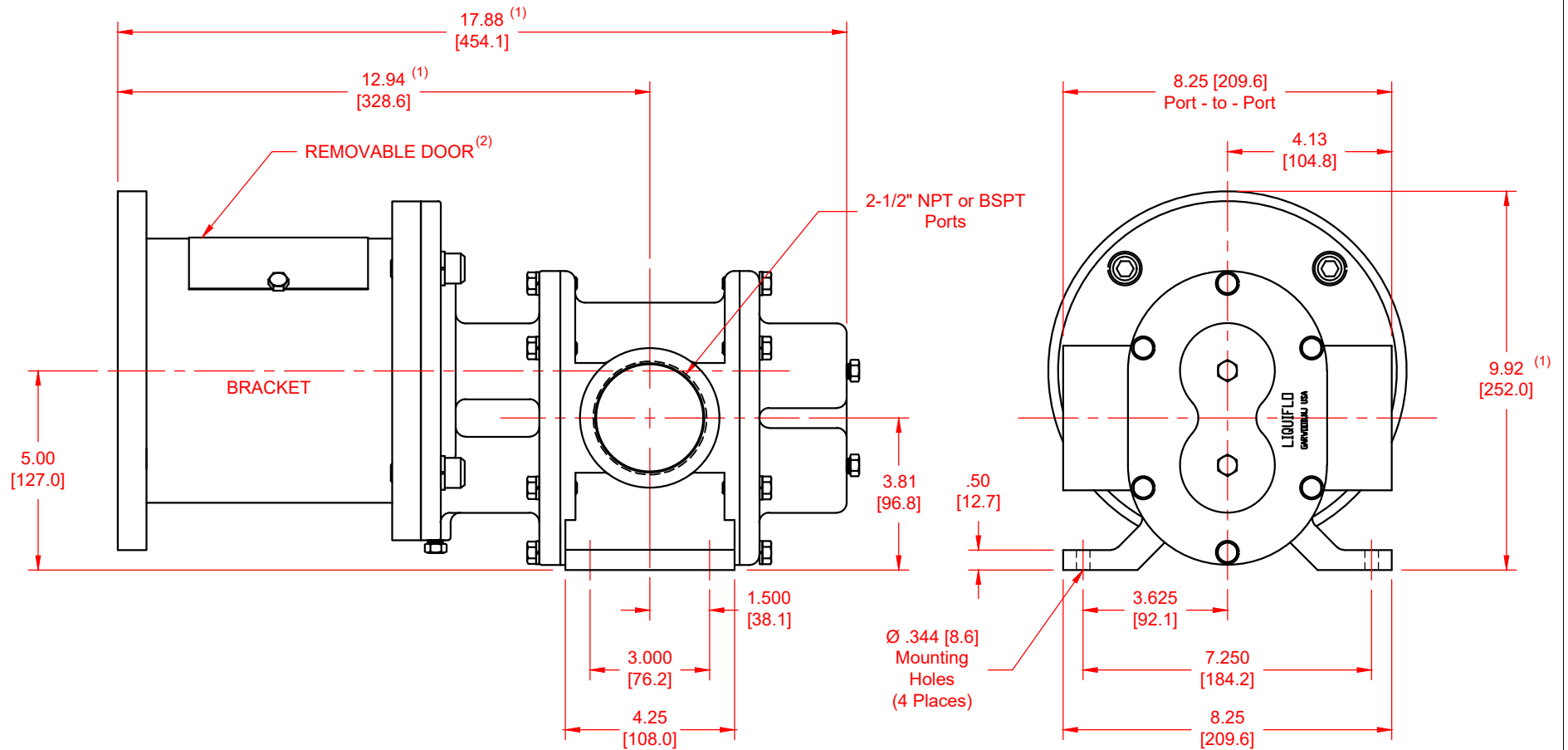
NOTES:

- 1) Applies for NEMA 182/184TC & 213/215TC motors. 254/256TC motors require 1.25 [31.8] thick adapter plate p/n SP0047.
- 2) Enables access to mechanical coupling; not applicable for Mag-drive pumps.

DWG. NO. 20169 (1 of 2) REV.

SERIES	MODEL	CONFIGURATION	SEAL TYPE
H-Series	H14F	Sealed or Mag-Drive Gear Pump Close-Coupled Version (IEC) with NPT or BSPT Ports	Single or Double Mechanical Seal or Mag-Drive (Sealless)

UNITS: inches [mm]



NOTES:

1) Applies for IEC 100 & IEC 112 motors. IEC 132 motors require 0.79 [20.0] thick adapter plate p/n SP0050.

2) Enables access to mechanical coupling; not applicable for Mag-drive pumps.

DWG. NO. 20169 (2 of 2) REV.